



TS SECURE REMOTE ACCESS **PLUS**

Marketing Documentation

PRODUCT CATALOG

**TSPLUS & SECURITY
COMPANIONS**

BY TSPLUS INTERNATIONAL - 2019 - ALL RIGHTS RESERVED

Table of Contents

- **STARTER PACKS/TSPLUS**

TSPLUS SYSTEM EDITION PAGE 03

TSPLUS PRINTER EDITION PAGE 03

- **BEST OFFER/TSPLUS**

MOBILE WEB EDITION PAGE 04

- **FULL PRODUCT/ TSPLUS**

ENTERPRISE EDITION PAGE 05

- **FREWARE/ TSPLUS**

MOBILE APP PAGE 06

- **EDITIONS AND PRICES/ TSPLUS**

EDITION COMPARISON PAGE 07

PRICES AND SUPPORT PAGE 10

- **SECURITY COMPANIONS/ TSPLUS**

TWO FACTOR AUTHENTICATION PAGE 11

TSPLUS ADVANCED SECURITY PAGE 13

SERVER GENIUS PAGE 15

STARTER PACKS

SYSTEM EDITION

CORE REMOTE DESKTOP AND APPLICATION DELIVERY FEATURES

If you wish to benefit from the TSplus core features at the lowest price,



The TSplus SYSTEM Edition is for you!

Features Included:

- ✓ TSplus Administrator Tool (AdminTool).
- ✓ Concurrent Remote Desktop support.
- ✓ Application Control per user and/or per group.
- ✓ TSplus Remote Taskbar and/or TSplus Floating Panel.
- ✓ TSplus Portable Client Generator.
- ✓ Remote Desktop, Seamless or RemoteApp connections clients.
- ✓ Local and/or Remote connection are supported.
- ✓ Local workgroup or within a domain.

PRINTER EDITION

ALL THE FEATURES OF SYSTEM EDITION. ALSO INCLUDES THE TSPLUSUNIVERSAL PRINTER!

If you have to print from any place within your TSplus sessions,



The TSplus PRINTER Edition is for you!

Features Included:

- ✓ Universal Printer enables you to print from any location, without having to install any specific printer driver.
- ✓ TSplus Administrator Tool (AdminTool).
- ✓ Concurrent Remote Desktop support.
- ✓ Application Control per user and/or per group.
- ✓ TSplus Remote Taskbar and/or TSplus Floating Panel.
- ✓ TSplus Portable Client Generator.
- ✓ Remote Desktop, Seamless or RemoteApp connection clients.
- ✓ Local and/or remote connections are supported.
- ✓ Local workgroup or within a domain.

BEST OFFER

MOBILE WEB EDITION

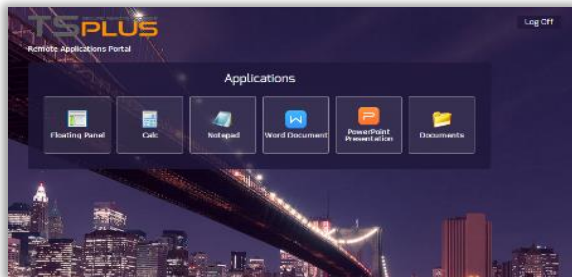
OUR BEST SOLUTION TO CONNECT FROM EVERYWHERE!

- ✓ **Connect With Any Browser**
Internet Explorer, Safari, Firefox or Chrome.



The Web Portal includes HTML5 and RemoteApp Web Access Clients. Easily connect from all kinds of mobile devices.

- ✓ **Customizable Web Portal**
Easy-to-use Webmaster Toolkit



The Web Application Portal is displaying the user application list. Add your company colors, name and pictures.

- ✓ **Built-in HTTP/HTTPS Web Server**
Securely connect from anywhere!



With the TSplus SSH Tunneling and port forwarding, all network communications are end-to-end encrypted. TSplus Web Credentials allow using a pin-code.

- ✓ **Virtual Universal Printer**
Print pictures and files from any location



Print from your IPAD or your Tablet on the closest local printer. No specific printer driver needed.

All the TSplus SYSTEM Edition and TSplus PRINTER Edition features are included.

FULL PRODUCT

ENTERPRISE EDITION

ALL THE FEATURES IN ONE PRODUCT!



The Enterprise Edition is delivering you the full TSplus product benefits.

If you wish to host a large number of users and to deploy a farm of servers, to manage your servers' usage by implementing load-balancing and to secure your remote access with a reverse proxy Gateway, with no limit for your future deployments,

The *TSplus* ENTERPRISE Edition is for you!

Included Features:

- ✓ Support any number of servers for a fully scalable TSplus Farm of servers
- ✓ TSplus Farm architecture is easy to deploy & manage with Load-Balancing, secure Gateway and Reverse Proxy possibilities.
- ✓ Single Enterprise Portal to access all your TSplus servers.
- ✓ Gateway Portal including Reverse-proxy role and/or Access Server Control role.
- ✓ All TSplus edition features and benefits are included into TSplus Enterprise Edition.



“ WE HAVE BEEN USING TSPLUS SINCE 2009 ON MORE THAN 5 SERVERS THROUGHOUT OUR BRANCHES. WE FIND THIS SOLUTION EASY TO USE AND DEPLOY, AND MOST IMPORTANTLY IT MEETS OUR REQUIREMENTS WITH AN AFFORDABLE COST. BESIDES THAT, THE RESPONSE AND SUPPORT FROM TSPLUS TEAM IS EXCELLENT! - Lee Lee LIM, LAM SOON

FREWARE

TSPLUS MOBILE APP

CONNECTING THE WORLD

Working in the cloud... wherever you are, whenever you want.

With the *TSplus* Remote Desktop app, your Windows Applications are available **anywhere in real time**. All you need is an internet connection.

The App can build up any number of connections simultaneously to different sites and servers. With just one click, you are connected to the server in New York; with another click, you start your CRM app in Los Angeles.

From smartphone...



To workstation...

Mobility = Success

All end devices are compatible with the same unlimited functionality for the same operations!

Download Links:

[Android \(GooglePlayStore\)](#)

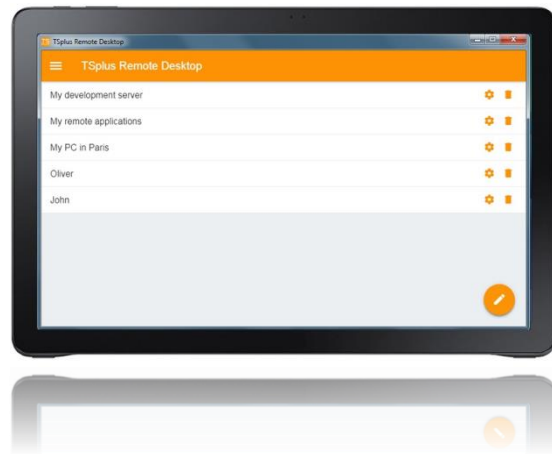
[iOS \(Apple AppStore\)](#)

[Windows](#)

[Debian](#) and [Linux](#) Versions

TSplus Apps are available for all major operating systems as web or native apps.

- ✓ After a quick download, your devices are ready for use within a few minutes.
- ✓ Easily print any document and photo you need on the nearest local printer.
- ✓ Use *TSplus* 2FA to secure your web server



The *TSplus* App is free and has 2 pre-requisites:

- The host site must be a *TSplus* Mobile Web or Enterprise system.
- The 11.30 or recent release must be installed on this host: Download the latest version.

EDITIONS & PRICES

	SYSTEM	PRINTER	MOBILE WEB	ENTERPRISE
TSplus Administrator Tool (AdminTool)	✓	✓	✓	✓
Concurrent connections support	✓	✓	✓	✓
Application Control /user or group	✓	✓	✓	✓
TSplus Remote Taskbar / Floating Panel	✓	✓	✓	✓
Remote Desktop access	✓	✓	✓	✓
TSplus Portable Client Generator	✓	✓	✓	✓
Seamless and RemoteApp connection clients	✓	✓	✓	✓
Fully compliant with RDP protocol	✓	✓	✓	✓
Dual Screen support, bi-directional Sound, Remote FX when compatible with Windows version	✓	✓	✓	✓
Local & Remote connection support	✓	✓	✓	✓
Workgroup and Active Directory users support	✓	✓	✓	✓
Universal Printer: print from any location, no printer driver needed		✓	✓	✓
Connection from any web browser with TSplus, HTTP Web Server			✓	✓
Secure connection from any web browser with TSplus HTTPS Web Server and SSH server			✓	✓

EDITIONS & PRICES

HTML5 and RemoteApp web access clients	✓	✓
Easy connection from iPhone/iPad and Android devices	✓	✓
Customizable logon web page with TSplus Webmaster Toolkit	✓	✓
With TSplus Web Applications Portal, access your applications list inside any web browser	✓	✓
Connect with just an e-mail or a pin-code with TSplus Web Credentials	✓	✓
TSplus Web Lockout feature: monitor failed Web Login attempts on your TSplus server. and block users	✓	✓
Unlimited number of servers within each TSplus Farm		✓
Up to 1.000 users working concurrently on a scalable Load-Balanced architecture		✓
Single Enterprise Portal to access all your TSplus servers		✓
Ability to assign one or several Application to users or groups		✓
Load Balancing & Failover support		✓

EDITIONS & PRICES

4 EDITIONS TO MEET YOUR NEEDS!



SYSTEM Edition:

Instantly deliver a multi-user access system on Windows XP to 2019. (32 or 64 bits).

Open multiple sessions, enjoy seamless Remote App display and easily manage all settings with advanced Application Control.



MOBILE WEB Edition:

Enjoy the easiest remote access from any place and any device where you have an Internet connection and a standard WEB browser. Use the TSplus mobile App to connect faster from Smartphone and tablets.



PRINTER Edition:

Get the most of our Remote Access solution and print any file from your remote session directly to the closest printer. No driver printer needed, TSplus Universal Printer compress and print locally!



ENTERPRISE Edition:

Benefit from the full range of TSplus technologies, as well as a Gateway Portal to access multiple TSplus systems and a unique load-balancing system combined with an efficient Servers Farm Manager.

EDITIONS & PRICES

	System Edition	Printer Edition	Mobile Web Edition	Enterprise Edition
<u>3 USERS</u>	\$90	\$120	\$200	\$220
<u>5 USERS</u>	\$150	\$200	\$300	\$350
<u>10 USERS</u>	\$250	\$350	\$550	\$650
<u>25 USERS</u>	\$600	\$720	\$1000	\$1050
<u>UNLIMITED USERS</u>	\$950	\$1100	\$1300	\$1400

SUPPORT AND UPDATES

The subscription to TSplus Support and Updates Services is mandatory to download any new updates and benefit from our Technical Support.

The subscription can be made or renewed for 1, 2 or 3 years.

1 YEAR

21% of the Licence Price

2 YEARS

18% of the Licence Price

3 YEARS

15% of the Licence Price

COMPANION TOOLS



TWO FACTOR AUTHENTICATION

ADD AN EXTRA LAYER OF SECURITY TO YOUR TSPLUS WEB PORTAL!

(Only with MOBILE WEB and ENTERPRISE, included as a 30 DAY TRIAL, 30 USERS!)

TSplus 2FA allows you to use your mobile device to access your remote session securely and conveniently.

Relying on just usernames and passwords to secure your online accounts is no longer considered safe.

Your employees are using TSplus to work from home, using their own devices to share personal and corporate data online, and then using those same devices for social media and other less secure communications and transmissions.

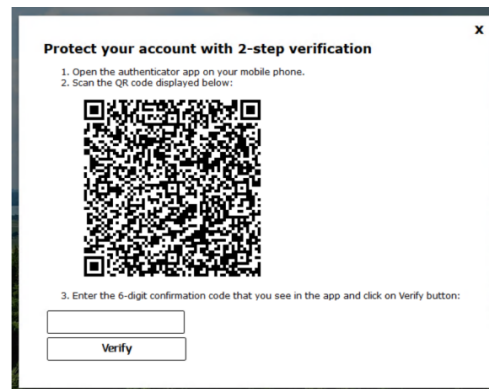


If you're an admin responsible for cybersecurity in a large organization, **you need to respond to this increased threat with efficient methods.**

All it takes is one weak link in the chain, one impatient or exhausted employee, to leave your organization vulnerable to attack.

TSplus 2FA is your key to a secure world.

By providing dynamic passcodes and multi-factor authentication, this add-on is the identity and access tool you need to secure your corporate network or your own personal data.



TSplus 2FA prerequisites on the user side:

- A personal portable device, such as a Smartphone
- An authenticator app installed on this device. The following apps can be used to proceed:
 - [Authy](#)
 - [Google Authenticator](#)
 - [Microsoft Authenticator](#)

COMPANION TOOLS

✓ Easy To Install and Use

Totally driverless

Just Enable TSplus 2FA and add the users and groups you wish to use this method connect to your Web Applications Portal.

It is a two steps verification process:

- **One:** At the first connection to the Web Portal, the user will need to enter his phone number or scan a QR code to configure the authentication method (SMS or App) and authenticate his device.
- **Two:** At every future connection, he will need two pieces of information: his credentials and the authentication code automatically generated on his mobile device.

✓ Easy To Configure and Manage

Complete dashboard and many options

In the «2FA» tab of the AdminTool, the Administrator can handle all credentials resets in just a few clicks.

You can easily configure users, choose the verification method (per user), manage SMS settings and test the feature directly. **It is simple, flexible and powerful!**

✓ Extra Layer of Security

Drastically reduce the risk of hacks!

Build strong and frictionless passwords for your TSplus Web Application Portal.

With a single touch, users can generate dynamic and one-time number combinations (the verification codes are generally reset every 30 seconds) to supplement static usernames and passwords for added security.

So even if the passwords are acquired, they cannot be reused or sold.



✓ Available Offline & Multiplatform

Accessible on Multiple Devices

Get two-factor authentication on your device **without any extra hardware.**

Users can authenticate using generated passwords on their device even when those devices are offline. Picking between SMS or Authenticator App allows compatibility with any mobile OS!

TSplus 2FA license is valid per server!!

COMPANION TOOLS



TSPLUS ADVANCED SECURITY

THE PERFECT TOOL TO SECURE YOUR TSPLUS' REMOTE SERVERS!

TSplus Advanced Security offers cutting-edge functionalities and makes the use of remote access in your daily routine as safe as possible.

Most organizations assume that the hackers who threaten them will be motivated by the value of the information the company uses to provide its services. The truth is that cyber criminals don't necessarily care about the value of corporate, personal and/or financial data. Many attacks are perpetrated on systems because there's value in the processing power of the systems themselves.



As Windows infrastructures grow and evolve, it gets more and more difficult for security experts to see all the endpoints in their architecture. **And you need to know your Remote Desktop vulnerabilities to mitigate your risk.**

TSplus **Advanced Security** consists of a robust and integrated set of security features to protect against these Remote Desktop attacks. This software approach combines advanced technology as well as the latest lessons and insights our elite team of Remote Desktop cyber security specialists brings back from real-world missions.



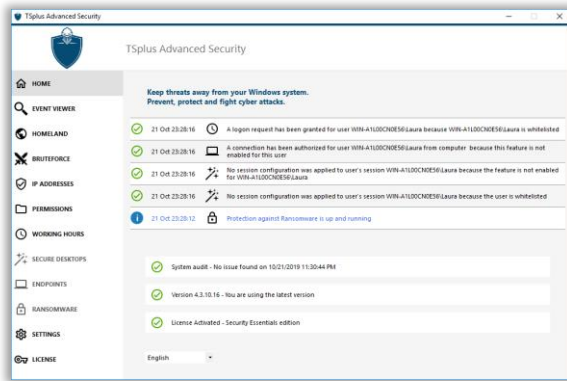
TSplus Advanced Security is available in two editions:

- **SECURITY ESSENTIALS:** the best package to keep your Remote Desktop connection safe, with powerful protection features. It is the low-cost security solution you can even apply to all W7/W10 Pro RDP accesses.
- **ULTIMATE PROTECTION:** the security tool every Windows Server administrator "Must Have": it provides everything you need to effectively protect your user environment and prohibit malicious actions.

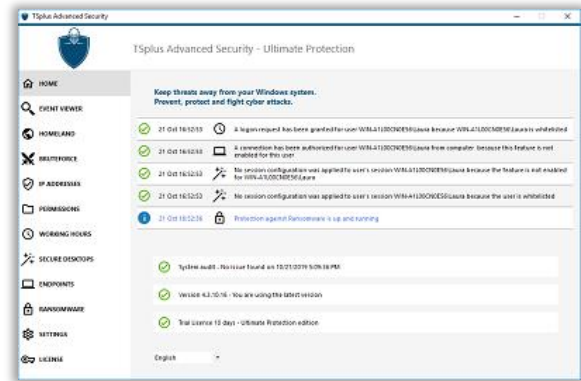
COMPANION TOOLS

*THE 360 DEGREE APPROACH TO SECURITY
INCLUDED IN TSPLUS AS A TRIAL VERSION*

SECURITY ESSENTIALS EDITION



ULTIMATE PROTECTION EDITION



Included Features:

- ✓ **Homeland Protection:** Prevent attackers from opening a session.
- ✓ **Prevent brute-force attacks:** Blacklist the offending IP addresses
- ✓ **Working Hours restriction:** Prohibit users to connect at night (for all users)
- ✓ **Permissions:** Quickly *inspect* access rights per users & groups of users
- ✓ **IP Management:** All IPs information detected by *Homeland* and *BruteForce* protections to manage from one place
- ✓ **Events Log:** Displays the last 2500 events

Included Features:

- ✓ **All features from the SECURITY ESSENTIALS Edition.**
- ✓ **Ransomware protection:** Immediately detect ransomware attack and stop data encryption
- ✓ **One click to Secure Desktop:** Provide a highly secure user environment (per user or per group)
- ✓ **End-Point Device Protection:** Restrict access per device (per user).
- ✓ **Permissions:** Quickly *inspect and Edit* access rights per users & groups.

*IT JUST WORKS OUT OF THE BOX AND DISPLAYS THE MOST USEFUL DATA EXTRACTED FROM YOUR SERVER. WITH **TSPLUS ADVANCED SECURITY** YOU CAN LOG IN TO YOUR SERVER FROM ANYWHERE, AT ANY TIME, WITHOUT FEAR OF EXTERNAL ATTACKS.*

COMPANION TOOLS



SERVER GENIUS

ALL YOU NEED TO KNOW ABOUT TSPLUS' OPERATIONS!

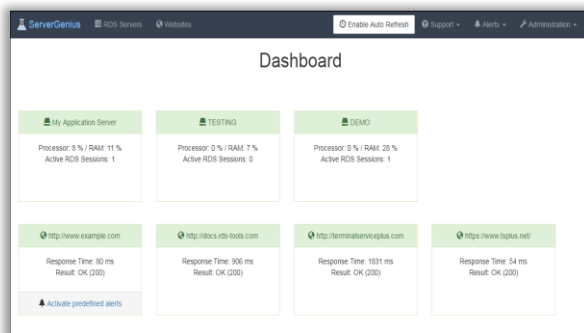
Server Genius is the easiest reporting solution to setup on your server:

- 30 seconds setup.
- Fast configuration.



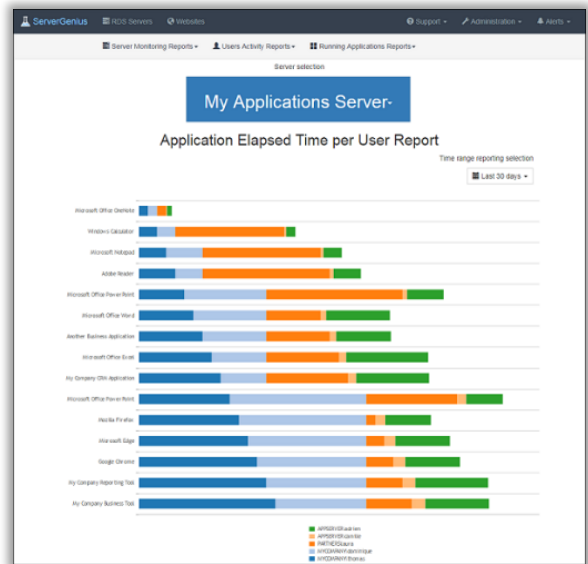
Server Genius gives you facts and data about your servers, applications and users.

Monitor all your server and website activities in one interface!



Reveal important audit information about applications and determine the most frequently used applications on an RDP host server.

Monitor the total time users spend using a specific app. Measure bandwidth usage, be aware of a server failure, gain important information for future network upgrades, and much more.



Detailed application usage tracking helps identify the most intense activity periods per application and per user.

COMPANION TOOLS

MONITOR YOUR SERVERS AND WEBSITES FROM YOUR WEB BROWSER!

INCLUDED IN TSPLUS AS A TRIAL VERSION

Server Genius performance and application analytics instantly alert IT teams to abnormal or suspicious user activity.

Performance and usage analytics generated by *Server Genius* allow alerts to be based on chosen events that occur during a date-range.

Customize alerts with thresholds & time-ranges.

These alerts generate emails and notifications by browser pop-ups for an immediate awareness of the Administrator. Access the reports anywhere anytime with our user-friendly web application, compatible with tablets and smartphones.

Name	Threshold	Action	Manage
My Applications Server	CPU > 85% for at least 3 minutes	Send an email to sys-admin@your-company.com	Remove
Development Server	Memory > 80% for at least 10 minutes	Send an email to sys-admin@your-company.com	Remove
Accountancy	Active Users > 20 for at least 2 minutes	Send an email to sys-admin@your-company.com	Remove
https://www.tsplus.net/	Response Time > 10000 ms for at least 3 minutes	Send an email to sys-admin@your-company.com	Remove

Receive real-time alerts from anywhere in the world and troubleshoot important issues faster!

Server Genius is available in three editions:

- *Server Genius* ESSENTIALS:
Monitor 1 server and 1 website.
- *Server Genius* STARTUP:
Monitor 5 servers and 5 websites
- *Server Genius* BUSINESS:
Monitor 10 servers and 10 websites



Server Genius is a complete solution for identifying and managing user-based risks. Track remote access to Host Server and monitor RDP sessions now!

COMPANION TOOLS

LICENSE/ SERVER	Edition Essentials	Edition StartUp	Full Featured Edition
<u>TWO FACTOR AUTHENTICATION</u>	-	-	\$250
<u>TSPLUS ADVANCED SECURITY</u>	\$50	-	\$250
<u>SERVER GENIUS</u>	\$90	\$350	\$650

ALL SECURITY COMPANIONS INCLUDE THE FOLLOWING FEATURES:

- ✓ Smart Dashboard
- ✓ Customizable settings
- ✓ Events' alerts & reports
- ✓ Available on any device

Visit www.terminalserviceplus.com